



**PANZI** **RADICAL HOPE**  
**ANNUAL REPORT 2023**

# CONTENTS

Letter from Dr. Denis Mukwege	4
Letter from the Executive Director	7
Panzi Overview: How we work	8
2023 at a glance	9
Conflict in the DRC	10
<b>Holistic Care</b>	<b>12</b>
Medical Treatment	14
Psychosocial support	16
Mobile Clinics	19
Legal Assistance	20
Socio-Economic Reintegration	22
Replicating Holistic Care Through Partnerships	25
Transformative Programming	26
Financial Overview	34
Our Partners	35

“  
**TOGETHER, WE ARE MAKING A PROFOUND  
 DIFFERENCE IN THE LIVES OF SURVIVORS,  
 OFFERING THEM NOT JUST CARE, BUT  
 THE POSSIBILITY OF A FUTURE FREE  
 FROM VIOLENCE AND FILLED WITH HOPE**

# LETTER FROM DR. DENIS MUKWEGE

Dear Friends, Partners, and Supporters,

As we reflect on the year 2023, I am deeply moved by the extraordinary commitment and resilience demonstrated by the staff at Panzi Hospital and the Panzi Foundation. Despite the worsening humanitarian crisis in the Democratic Republic of Congo, our mission to deliver exceptional holistic care for survivors of sexual violence has not wavered.



**DR. DENIS MUKWEGE**

Founder and Medical Director, Panzi Hospital

Founder and President, Panzi Foundation

This year has been particularly challenging. The increased activity of armed groups in North Kivu has continued to ravage our communities, and the situation on the ground is deteriorating rapidly. The number of people in need of urgent medical care and psychosocial support is growing, and the scope of the atrocities being committed is deeply troubling.

Yet, in the face of these overwhelming challenges, our staff at Panzi Hospital and the Panzi Foundation have gone above and beyond to provide comprehensive care – medical, psychological, legal, and socio-economic – to more than 3,000 survivors who walked through our doors this year. The One Stop Center model that we have developed at Panzi has proven to be a lifeline for so many across the country, offering not just treatment, but hope and dignity to those who have suffered unimaginable violence. In 2023, we brought on new leadership to spearhead our Foundation programs, and contributed to

more than 8 new studies on our holistic care model in action. The efforts of our team are a powerful testament to the strength of the human spirit and the unwavering belief that every life is valuable and worth fighting for.

Driven by the vision of a peaceful DRC where women can heal and thrive, Panzi will continue to expand access to care to survivors of sexual violence in 2024 and the years ahead. We will address the root causes of sexual violence as a weapon of war and the prolonged humanitarian crisis in DRC, including the illegal exploitation of critical minerals. Driven by the needs of the communities we serve, we will work hand-in-hand with global leaders, businesses, policy-makers, and advocates to not only affect change and realize peace, but to ensure improved regulation of the mineral trade. We will push for sustainable policies and laws around this trade that benefit the Congolese people and the world as a whole during the “green transition.”

In these times of unprecedented crisis, the solidarity and commitment of our global community of supporters gives us the strength to persevere. Whether through financial contributions, advocacy, or collaborative projects, your partnership has been crucial in enabling us to continue providing life-saving care to those who need it most. Together, we are making a profound difference in the lives of survivors, offering them not just care, but the possibility of a future free from violence and filled with hope.

We will confront these challenges head-on, inspired by the courage of the survivors we serve and bolstered by the unwavering support of our global partners. Our mission is as vital as ever, and together, we will continue to advance the cause of justice, peace, and healing.

Thank you for standing with us. With deepest gratitude,

**Dr. Denis Mukwege**



“**PANZI OFFERS NOT JUST TREATMENT, BUT HOPE AND DIGNITY TO THOSE WHO HAVE SUFFERED UNIMAGINABLE VIOLENCE**”

“  
**THOSE WHO WERE  
 ONCE TRAINED BY  
 PANZI ARE NOW  
 LEADING CARE  
 FOR OVER 2,000  
 SURVIVORS EACH YEAR**



“  
**THE RESILIENCE  
 AND COMMITMENT  
 OF THOSE INVOLVED  
 ARE MAKING A  
 SIGNIFICANT IMPACT  
 ON COUNTLESS LIVES**



## LETTER FROM THE EXECUTIVE DIRECTOR

When I first discovered the work of Dr. Mukwege and the Panzi Foundation, I saw an exciting opportunity to apply my skills and passions towards strengthening local organizations, promoting women’s leadership, and enhancing economic mobility.

Since arriving in Bukavu, I have been continuously inspired by what is being achieved. Despite facing overwhelming challenges, the resilience and commitment of those involved are making a significant impact on countless lives. Twenty-four years after the establishment of Panzi Hospital, Dr. Mukwege and his team have not only sustained holistic care but have also expanded its reach to the Central African Republic, Ukraine, Ethiopia, and other regions. This speaks volumes about the mission’s effectiveness.



**VANESSA GOSCINNY**  
 Executive Director, Panzi Foundation

Those who were once trained by Panzi are now leading care for over 2,000 survivors each year. Women educated at Maison Dorcas are joining cooperatives and starting small businesses. In Pablo Picasso’s famous painting “Guernica,” depicting the devastation of the Spanish Civil War, a small, bright flower stands out amid the chaos. For me, this flower symbolizes a radical hope of a better tomorrow.

The forces perpetuating violence in Congo and elsewhere aim to make us lose hope and believe that change is impossible. Yet, every day, Panzi embodies that small flower of hope: demonstrating that survivors of severe violence can receive care, heal, rebuild their lives, and help others. These stories of transformation and healing remind us that positive change is always possible, even against the greatest odds.

*In 2023, Panzi Foundation had the honor of welcoming Vanessa Goscinnny as our Executive Director, based in Bukavu. With more than 15 years experience leading community-driven and philanthropic organizations in Haiti and France, we are thrilled to have her expertise as Panzi improves and grows its holistic care model in the years to come.*

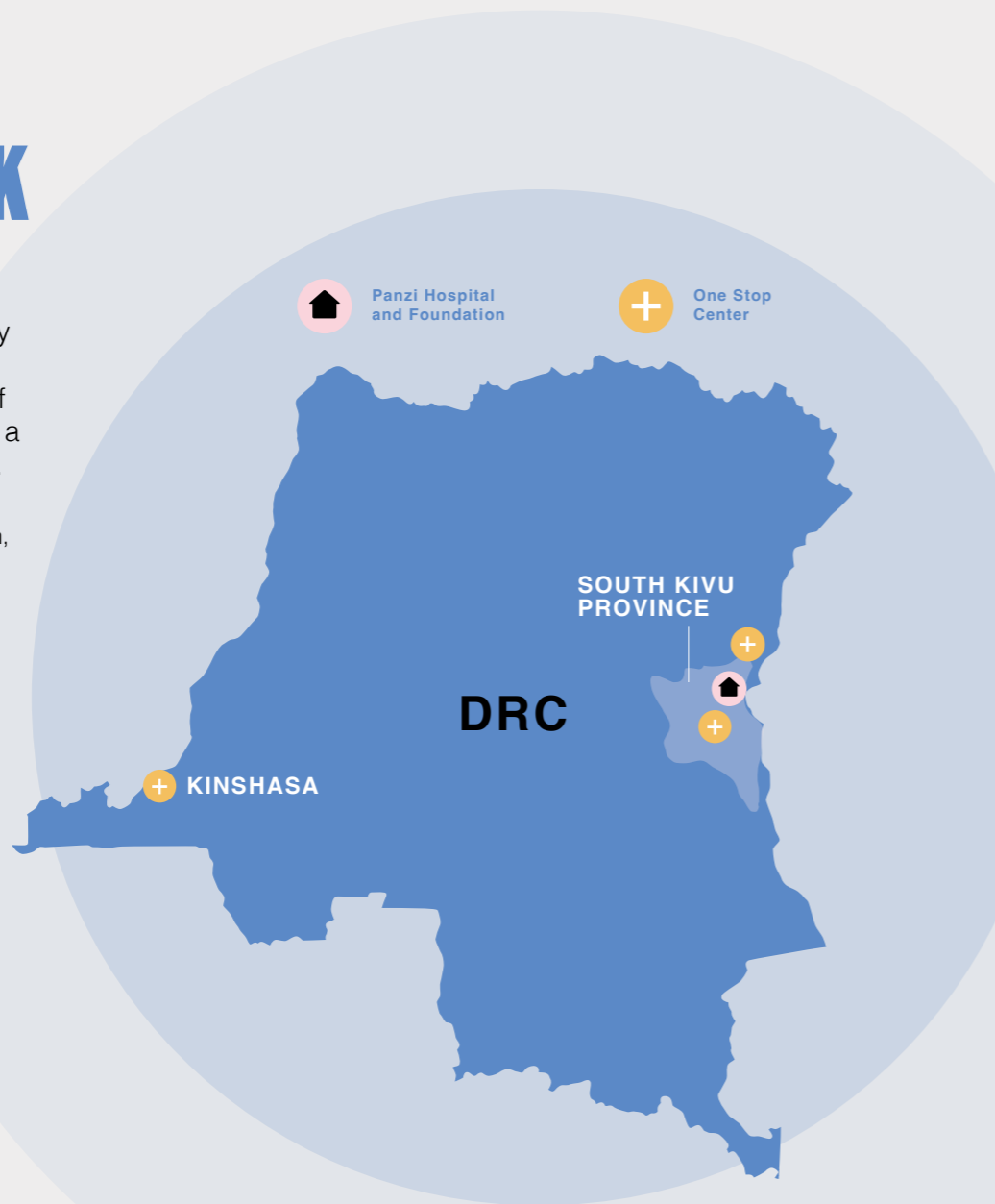
## PANZI OVERVIEW

# HOW WE WORK

Panzi Hospital was founded in 1999 by Dr Denis Mukwege in Bukavu, South Kivu province, Democratic Republic of Congo, with the intention of becoming a high-quality facility for maternal health.

The first patients were not women in childbirth, but women who had been brutally raped during the Second Congo War. Dr. Mukwege and his team were thus reluctantly forced to become experts in managing these trauma cases. Overtime, Panzi Hospital has become a Center of Excellence in the repair of fistula and gynecological injuries, as well as the management of high-risk pregnancies and childbirth.

Aware that medical and psychosocial treatments were not enough to help these women and girls rebuild their lives, Dr. Mukwege created the Panzi Foundation in 2008 to offer survivors comprehensive care: access to psychosocial support and legal services, opportunities for socio-economic reintegration and medical care outside Bukavu. Today, the Panzi Foundation has two offices: the headquarters in Bukavu and an office in Washington, DC, which supports fundraising and international advocacy efforts.



## 2023 AT A GLANCE

### REACH

**3,387**  
survivors treated at Panzi Hospital, One Stop Centers, and mobile clinics

**279**  
women & girls who graduated from our vocational training

**4,544**  
institutional deliveries at Panzi facilities

**3,045**  
survivors receiving psychosocial support

### ACTIVITIES



### IMPACT

**100%**  
survivors seen within 72 hours of an assault received a PEP kit

**75%**  
patients who have successfully reintegrated into their home communities following psychosocial care

**77%**  
conviction rate in cases brought by Panzi legal clinics

# CONFLICT IN THE DRC

The eastern region of the Democratic Republic of Congo (DRC) has been embroiled in conflict for over 25 years. It is the largest humanitarian disaster since the Second World War: more than 5 million Congolese people have been killed since the conflict began in 1999, with 7 million currently displaced today.<sup>1</sup>

In large part, this conflict has been driven and exacerbated by the nation's vast mineral resources. Armed militia groups utilize brutal violence – including sexual violence – to gain control over the communities where these lucrative minerals are located.



Rape is used as a weapon of war at a mass scale to destroy communities and assert dominance. Médecins Sans Frontières (MSF) reported over 90,000 cases of sexual violence in 2023 alone.<sup>2</sup>

Moreover, the war has devastated the DRC's healthcare system. Millions lack access to basic medical care, increasing malnutrition and mortality. Most health facilities do not have qualified providers to provide safe maternity services and respond adequately to rising cases of gender-based violence.

Over the past year, the rebel group M23 has seized growing swaths of territory in Panzi's neighboring province, North Kivu.<sup>3</sup> Increased armed violence and military operations against M23 have caused the security situation to greatly deteriorate across the region, including in neighboring South Kivu province, where Panzi is located.

Research shows that the consequences of sexual violence can include anxiety, post-traumatic stress disorder (PTSD), stigma and social isolation, poor health outcomes, and the breakdown of community bonds.<sup>4</sup> Since 1999, Panzi has designed and adapted its holistic care model to respond with speed and quality to the needs of survivors and other vulnerable populations in the midst of this escalating conflict.



1. Council on Foreign Relations Global Conflict Tracker: Conflict in the Democratic Republic of Congo (June 2024)

2. United Nations Press Release: "As Democratic Republic of Congo Elections Approach, Speakers in Security Council Express Concern over Humanitarian Situation, Regional Tensions" (December 2023)

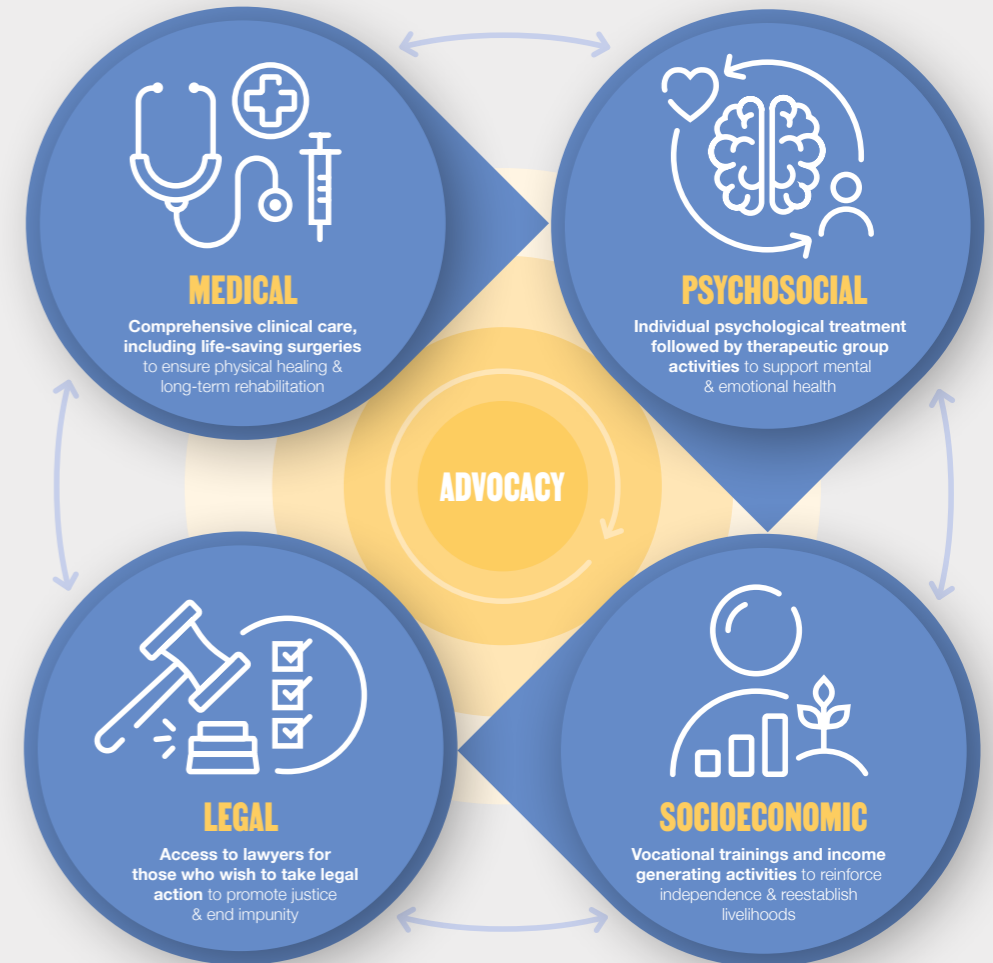
3. Voice of America: "Fresh Clashes as M23 Rebels Make Gains in East DR Congo" (January 2023)

4. A. Bosch: The Impact of Sexual Violence in the Democratic Republic of the Congo (2019)



# HOLISTIC CARE

Our globally-recognized, four-pillar holistic healing model is designed to meet the full spectrum of needs for survivors of sexual violence. Panzi creates a safe space for physical healing and emotional recovery, rebuilds livelihoods, and contributes to the long-term sustainable restoration of communities.



# MEDICAL TREATMENT

The first and the longest-running pillar of the holistic model, Panzi delivers medical treatment both through our flagship Panzi Hospital and satellite facilities called “One Stop Centers” (OSCs) in three locations across DRC.

These OSCs are designed to offer all four pillars of the holistic care model at a single facility or entry point. OSCs are typically integrated into existing health care structures to reduce the risk of stigma for survivors.

As part of our medical work across the region, Panzi ensures health centers have a reliable stock of post-exposure prophylaxis kits, or “PEP kits.” These kits contain a powerful suite of drugs that can help prevent a survivor from becoming pregnant and contracting HIV or other sexually transmitted infections, if taken within 72 hours following a rape. These medications help survivors to avoid some of the potentially life-altering consequences of assault, and allow them to focus on recovery, rather than grapple with an ensuing medical crisis.

Panzi hospital serves as both the general referral center for the Ibanda health zone, with over 480,000 people, and as one of three tertiary level facilities in South Kivu province, with a population of over 7 million. Over 24 years in operation and with more than 400 staff, the hospital has become a flagship center for the medical treatment of gender-based violence, surgery, and safe maternity care in Eastern Congo.

Through the Survivors of Sexual Violence Unit (SVS), Panzi Hospital provides complex emergency medical treatment, such as fistula and prolapse repair. The unit also offers care for sexually transmitted infections (STIs) and non-gynecological injuries. By offering care for survivors within the same framework as general medical services, Panzi ensures that no one can distinguish between those seeking treatment due to sexual

violence and those requiring other forms of medical care. This anonymity helps protect the privacy of survivors, shields them from social scrutiny, and allows them to retain their dignity.

Panzi also provides comprehensive maternity care to women from all backgrounds and has the capacity to receive women with high-risk deliveries from across South Kivu province.



## PANZI HOSPITAL

**3,230**  
Births

**1,093**  
new cases of sexual violence

**100%**  
Of 134 cases seen within 72 hours received PEP kits

**506**  
surgeries for prolapse and fistula

## OTHER ONE-STOP CENTERS

The impact of Panzi’s medical treatment was amplified at national scale by our One Stop Centers in Mulamba, Bulenga, and Kinshasa. In 2023, these centers saw:

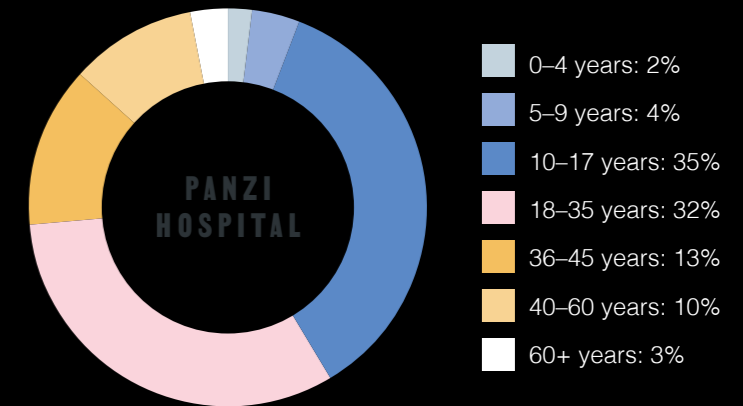
**1,314**  
Births

**691**  
new cases of sexual violence

**100%**  
Of 110 cases seen within 72 hours received a PEP kit

**293**  
surgeries for prolapse and fistula

## SURVIVOR DEMOGRAPHICS



### Highlight: Holistic Maternity Care for Young Survivors

In 2021, Panzi developed a model of compassionate, holistic maternity care for survivors of gender based violence. Women, particularly minors, who have become pregnant as a result of sexual violence may face psychological and emotional stress in anticipation of their delivery and the medical treatments surrounding it.

In response to this, the model connects each survivor with a designated midwife who provides targeted support during her pregnancy and post-partum period. This support can include group prenatal classes and specialized birth plans. 79 survivors gave birth through this program in the first half of 2023.



# PSYCHOSOCIAL SUPPORT

Closely linked to medical treatment for survivors, Panzi’s psychosocial services provide comprehensive support for those suffering psychological distress in response to traumatic events, including sexual and gender-based violence.

When data shows that low-income countries globally have just 0.1 psychologists per 100,000 inhabitants,<sup>5</sup> Panzi’s programming represents a sea-change in access to essential mental health care for the most vulnerable in Eastern DRC.

Panzi’s psychosocial programming can take multiple forms. Patients arriving at Panzi Hospital or one of our One Stop Centers are greeted by psychosocial assistant, or Maman Cherie, who guides them through their medical and mental health treatment. Maman Cheries can also support referrals to Panzi’s legal assistance and socio-economic reintegration

pillars. Once assigned to a psychologist, patients are screened using an interview tool adapted from the Diagnostics and Statistical Manual of Mental Disorders (DSM-IV), and can benefit from group sessions, individual counseling, movement therapy, and guided engagement with their family.

Beyond direct patient care, psychologists jointly lead provider training with the National Program for Mental Health, accompany other Panzi teams on mobile response missions, and conduct follow-up home visits to the communities of patients who have recently completed their reintegration.



**50x**

higher ratio of psychologist to patient in our South Kivu catchment areas compared to similar countries



**895**

patients treated with psychosocial care at our One Stop Centers in Mulamba, Bulenga, and Kinshasa



**2150**

patients treated with psychosocial care at Panzi Hospital, of whom nearly half were survivors



**75%**

patients successfully reintegrated into their home communities following discharge (of those assessed through home visits)



## Highlight: Following up with patients at home

When survivors complete their medical and psycho-social treatment with Panzi Hospital or a One Stop Center and re-enter their communities, our team follows up on their recovery through targeted home visits. Patients are identified for these home visits based on the needs identified at the time of their discharge. Home visits are led by a psychologist and psychosocial assistant, who meet with the survivor and assess their wellbeing within their family/community, using the same tools as those used in our facilities.

In 2023, Panzi completed 47 home visit trips and reassessed 1,243 survivors. Of those visited, 75% were found to have successfully reintegrated into their communities, returning to their work in farming and the marketplace and reprising activities like churchgoing and choir practice.

5. World Health Organization: World Mental Health Report (2022)



## MOBILE CLINICS

Beyond the holistic care we deliver at Hospitals and One Stop Centers, Panzi deploys teams from our facilities to provide rapid-response holistic support.

The composition of these teams vary based on context and need but can include clinicians, psychologists, psychosocial assistants, surgeons, anesthetists, and lawyers. Teams travel to health zones to identify and treat women and girls affected by sexual or gender-based violence or severe gynecological trauma, such as fistulas and organ prolapse. They provide medical, psychological first aid, and surgical interventions, followed by referrals to holistic care services.

Mobile clinic teams also provide the health zones they are visiting with much-needed medications and supplies, and provide general medical care for the community at large.

In 2023, Panzi led 78 medical and surgical mobile clinics across more than 30 health zones in the provinces of South Kivu, Tanganyika, Kinshasa, Sankuru, Lomami, Haut-Lomami, and Equateur. On International Women's Day, our team in Kinshasa held a special mobile clinic for 177 women in the country's largest central prison, Makala.

“  
**THE SOLIDARITY AND COMMITMENT  
OF OUR GLOBAL COMMUNITY  
OF SUPPORTERS GIVES US THE  
STRENGTH TO PERSEVERE**



# LEGAL ASSISTANCE

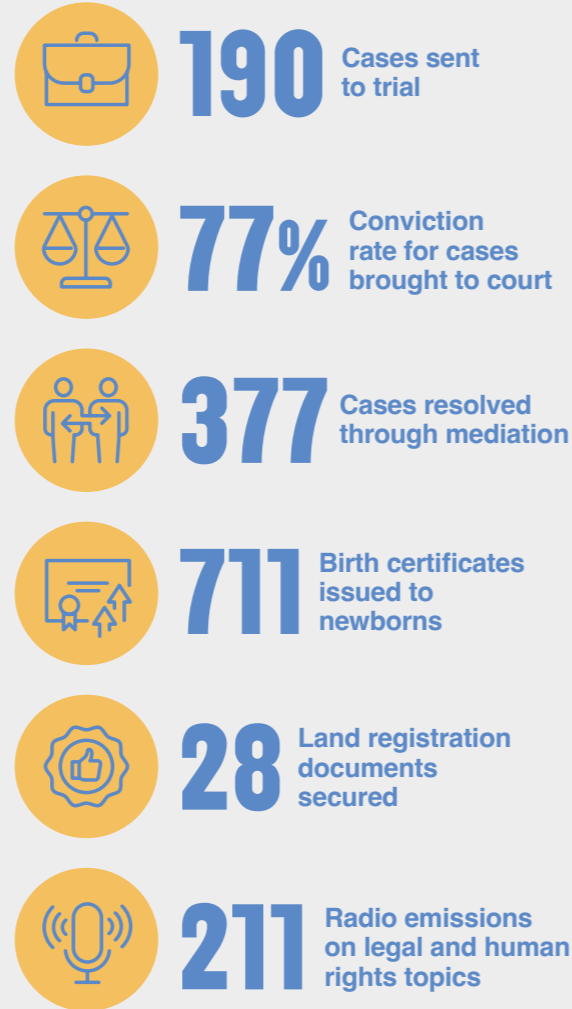
In DRC, the UN estimates that just 15% of survivors of sexual violence have access to the legal services they need to seek justice and reparations.<sup>6</sup>

Panzi's legal pillar seeks to address this deficit, facilitating free access to legal assistance from our team of lawyers and legal assistants located across South Kivu province. Our team guides survivors through the process of reporting their case to the authorities and provides counsel and accompaniment if the case proceeds to trial.

In cases of gender-based violence that are not punishable under Congolese law, Panzi facilitates mediation and conciliation efforts between willing parties. Survivors and community members can also access support for other legal matters, including land titles and birth certificates for their children. Alongside these initiatives, our team conducts outreach to communities across the region on human rights and accountability.

Our legal team works closely with the Congolese judicial system and its partners to build capacity and improve processes. Within South Kivu, Panzi serves as part of a task force to improve the judicial response to crimes against humanity. These task forces, or Legal Prosecution Support Units, are convened by the UN peacekeeping force, MONUSCO, and include both UN agencies and other non-state actors including Trial International, ABA Rule of Law Initiative, and Avocats Sans Frontières.

Panzi's work seeks to combat impunity at the systemic level and cultivate trust in the justice system among those who need it most.



6. UN OCHA: "Le Coordonnateur humanitaire appelle à poursuivre les efforts pour mettre fin aux violences basées sur le genre en République démocratique du Congo" (November 2020)



## Highlight: Birth certificates for children born of rape

In October 2023, the Panzi Foundation secured more than 411 birth certificates to children in the Kalehe region of South Kivu, a vital document needed to ensure full rights under Congolese law, in particular access to school. Many of these children were born as a result of rape, and thus did not have a father who could be included on their civil documents. Other children had been orphaned or abandoned and thus were unable to secure civil registration within the timeframe required to receive a free birth certificate. To rectify this injustice, Panzi's legal team submitted supplementary judgments to the designated courts, enabling birth certificates to be granted to these children on an exceptional basis. Those in Kalehe represent just over half the total birth certificates secured by our team in 2023.

# SOCIO-ECONOMIC REINTEGRATION

Women who have been victims of gender-based violence crimes frequently face stigma and marginalization. Research shows that as many as 29% of survivors were rejected by their families and communities<sup>7</sup> and that some are excluded from school or economic activities.<sup>8</sup>

This stigma and socio-economic isolation take place within an already fragile economy and high vulnerability. The World Bank estimates 74.6% of the Congolese population lives below the international poverty line. Women face additional barriers to full economic participation – nationally just 16.8% have completed secondary school.<sup>9</sup>

Panzi supports the successful reintegration of survivors into their communities by equipping them with the resources to become skilled professionals, entrepreneurs, and leaders. Our socio-economic programming includes transitional housing, vocational and literacy courses, agriculture training, small-business development, as well as savings and credit groups.

Maison Dorcas, originally established in 2004 and now integrated into the larger Panzi Foundation, serves as the center of Panzi’s socio-economic programming for survivors and other vulnerable populations. The center, located in Bukavu, operates as a safe space to empower survivors and their families in the transition from recovery to reintegration. Annually, over 2,000 women, girls, and children participate in at least one of the Maison Dorcas programs. The center has a team of 35 including a psychologist, nurses, literacy trainers, vocational skills specialists, social workers, educators, and child protection officers.



## Highlight: Coffee Cultivation

In 2023, Panzi continued to build out our coffee value chain project in the Kabare region of South Kivu, with new support from the Lavazza Foundation. The goal of this project is to train and support 300 survivors and other vulnerable members of the community to cultivate, process, roast, and serve coffee, ultimately improving their livelihoods over the long-term.

Following training on planting techniques and the germination process, in 2023 project participants planted 30,000 coffee seedlings over 15 hectares within a concession acquired by the Panzi Foundation. An additional 24,500 seedlings were distributed to community members who had their own plots of land.



**175** in transitional housing, including 48 children



**471** participants in agricultural training



**279** vocational training graduates



**31,464** members in savings and credit groups

7. K. Albutt et al: Stigmatisation and rejection of survivors of sexual violence in eastern Democratic Republic of the Congo (2017)

8. A. Bosch: The Impact of Sexual Violence in the Democratic Republic of the Congo

9. World Bank: Democratic Republic of Congo Overview (April 2024)

# REPLICATING HOLISTIC CARE THROUGH PARTNERSHIPS

Beyond those operated by Panzi, in 2023 our team also provided technical and operational expertise on our holistic care model to partners working across DRC and beyond.

A study in 2011 found that 55% of survivors in DRC had to travel more than one day to reach gender-based violence services.<sup>10</sup> As part of Panzi's mission to expand access to holistic care, we support and build the capacity of existing health facilities to operate as One Stop Centers or serve as satellite centers for the core activities of the model. In 2023, we supported 18 partner health facilities in both South Kivu and Tanganyika provinces to provide services to over 1,000 survivors of gender-based violence.

Panzi also works alongside our partners at the Denis Mukwege Foundation to replicate and scale the holistic care model in regions outside of Congo. Since 2019, our team has provided technical assistance to support the development of an OSC in Bangui, Central African Republic. Over the last year, Panzi has deployed our medical and psychosocial experts on six month rotations to provide additional surgical capacity and training for psychosocial providers.

<sup>10</sup> J. Kelly et al: Experiences of female survivors of sexual violence in eastern Democratic Republic of the Congo: a mixed-methods study (2011)

A group of women in colorful traditional attire, including headwraps and patterned dresses, are standing in a field. One woman in the center is carrying a wooden staff with a metal bowl attached. They are positioned in front of a chain-link fence, with rolling green hills and mountains in the background under a bright sky.

# GROWING PANZI'S REACH THROUGH TRANSFORMATIVE PROGRAMMING

Panzi's impact does not stop in Bukavu or even South Kivu. In partnership with communities and local stakeholders, Panzi is scaling and improving access to the holistic care model through One Stop Centers, operated both by Panzi and the public sector, conducting research on our approaches, and testing new ways to provide survivors with reparations. Underlining all these efforts is advocacy for change - both at the community and global levels.

## BADILIKA

Badilika, the Swahili word for “change,” is Panzi’s program to conduct outreach and behavior change communication at the local level to fight gender-based violence and popularize national and international human rights frameworks. In 2023, our team organized community dialogues on women’s participation in local governance, held interactive seminars for couples, religious leaders and other influential members of civil society on positive masculinity in the home, and supported grassroots campaigns against impunity for sexual violence.



## CITY OF JOY

A joint program of Panzi and V-Day, City of Joy was launched in 2011 to promote transformational leadership in the fight against violence against women and girls. City of Joy recognizes and reinforces the links between emotional healing and leadership, women’s empowerment and community service. Each year, 180 women between the ages of 18 and 29 are accepted into City of Joy’s 6-month program to heal, learn, and become leaders in their own communities.



Transformative programming



## RESPONSIBLE SOURCING

Violence against the Earth and violence against women are intrinsically linked. In Eastern DRC over 1000 mines have an armed presence, and sexual and gender-based violence are used as war tactics to control mines and smuggling routes. Panzi works with survivors, sex workers, and vulnerable women in artisanal mining communities across the region to break this cycle of sexual and gender based violence. We also support responsible sourcing initiatives in the DRC and work to address the issue of conflict minerals globally through dialogues with stakeholders engaging with the mineral value chains and advocacy for policy change related to the sourcing of Congolese minerals.



## REPARATIONS FOR SURVIVORS

In partnership with the National Survivors Movement and the Global Survivors Fund, founded by Nadia Murad and Dr Mukwege following the joint receipt of the Nobel Peace Prize, Panzi has led an initiative to provide survivors of gender-based violence with interim reparations at both the individual and community levels. Since it started in 2020, this initiative has reached over 1,000 survivors in the Masisi, South Kivu, and Kananga provinces. While the Congolese government launched a fund for survivor reparations in 2022, FONAREV, this effort is not yet in line with international standards or existing transitional justice efforts. Panzi and our partners continue to advocate for its improvement and accountability.



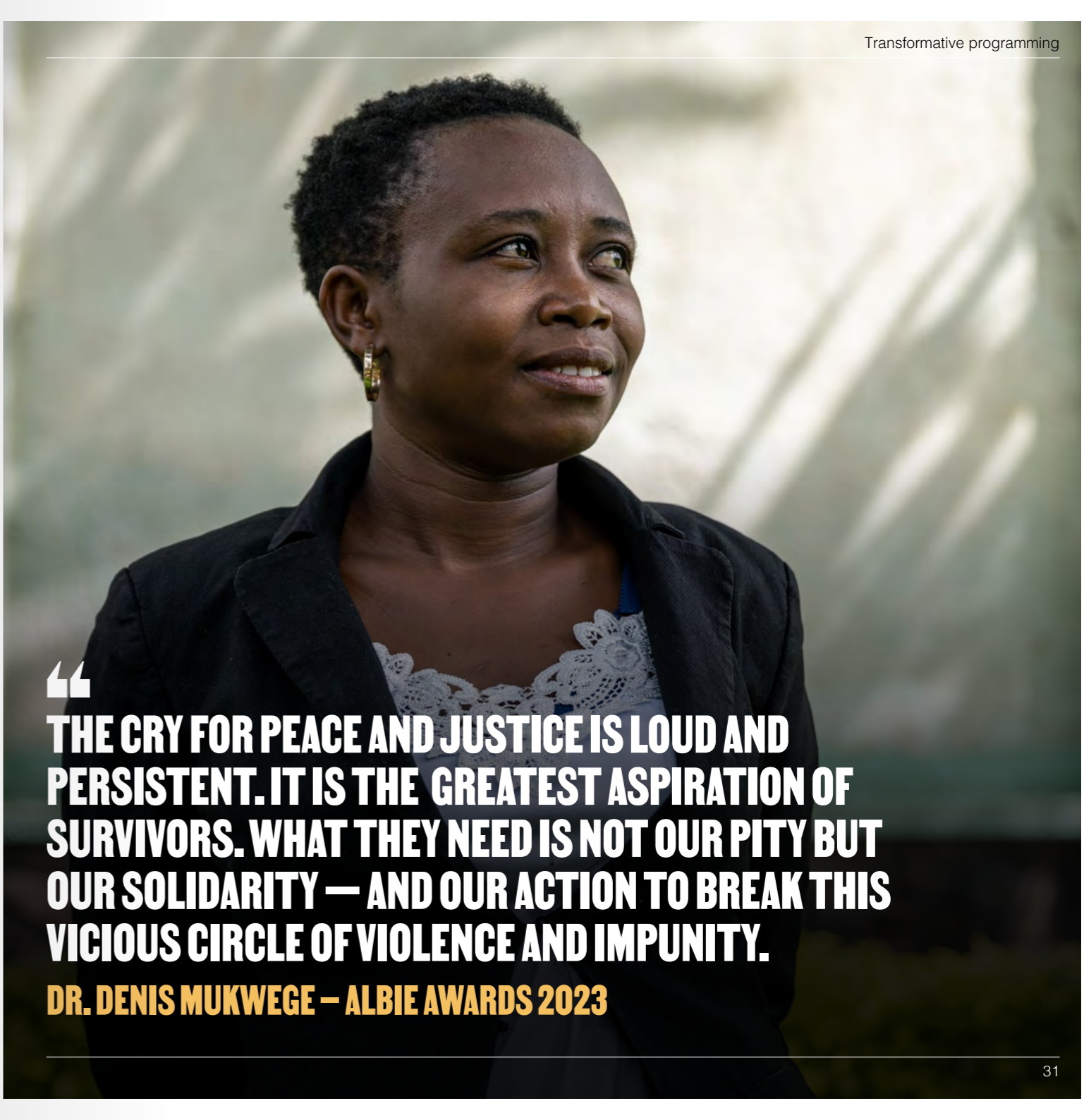
## GLOBAL ADVOCACY

Panzi accompanies our direct programming in DRC with global advocacy to bring justice for survivors of gender-based violence. In 2023, Panzi Director and Founder, Dr. Mukwege continued to make the case for the end of rape as a weapon of war and for action towards peace in Congo. In September, he was awarded the Lifetime Achievement Award by the Clooney Foundation for Justice at their second annual Albies Gala. He used his remarks as an opportunity to call for an end to tragedy in Congo and build a path to lasting peace through justice.



## ICART

The International Center for Advanced Research and Training (ICART) is a joint initiative between Panzi the Evangelical University in Africa (UEA) with the goal of building local research capacity and contributing to the global evidence base on the prevention and treatment of gender-based violence. In 2023, publications by ICART focused on the role of psychosocial assistants in the Holistic Care model, as well as treatment of adolescent pregnancies following sexual violence.



“**THE CRY FOR PEACE AND JUSTICE IS LOUD AND PERSISTENT. IT IS THE GREATEST ASPIRATION OF SURVIVORS. WHAT THEY NEED IS NOT OUR PITY BUT OUR SOLIDARITY — AND OUR ACTION TO BREAK THIS VICIOUS CIRCLE OF VIOLENCE AND IMPUNITY.**

**DR. DENIS MUKWEGE — ALBIE AWARDS 2023**



NICOLE



SUCCESS STORY

**Nicole, age 30**  
Graduate of Vocational Training  
at Maison Dorcas

Nicole was 17 when she fell pregnant by accident and was rejected by her family. Through other women and girls in her neighborhood, she learned about Maison Dorcas and the support she might find there as she got back on her feet.

*"In June 2017, I presented myself during registration and was admitted for professional training. For a year, I was able to benefit free of charge from several training courses, including in baking, soap making, embroidery, sewing and later, tailoring."*

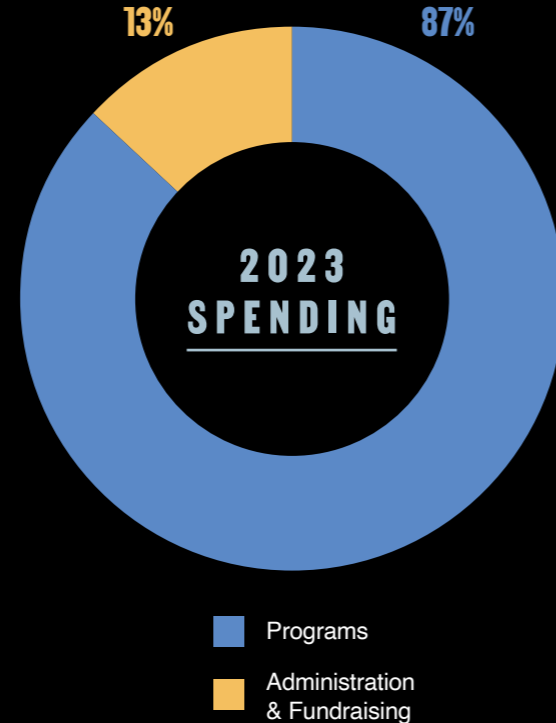
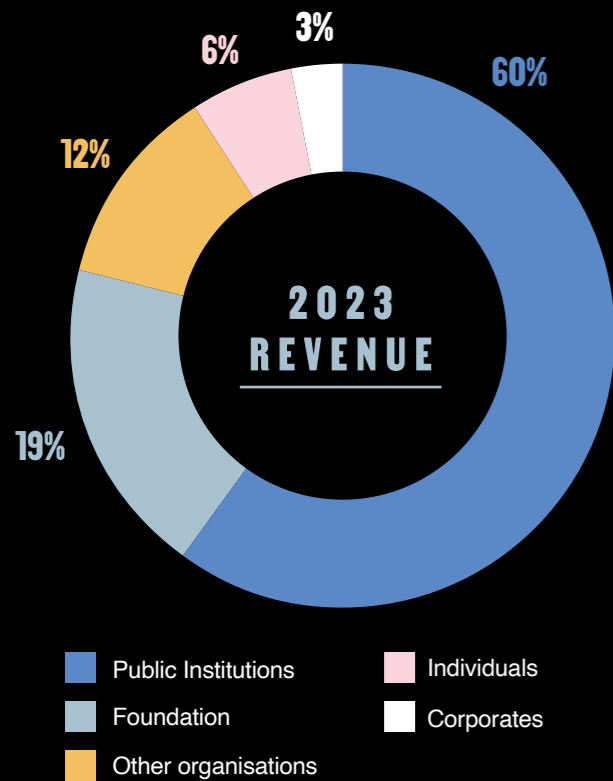
During her time at Maison Dorcas, Nicole was also able to access medical care whenever she needed it and benefit from psychosocial support. Of that time, Nicole remarks, *"Beyond the warm welcome and the quality of the training received, I was struck by the kindness, the advice, and the closeness of my trainer in the first level sewing class, which helped me to develop good manners and interpersonal skills."*

With the starter kit she received from Maison Dorcas upon graduation from the training program, Nicole was able to start a small tailoring workshop. Before long, she was able to make enough money to save up for three additional sewing machines and is training two other women in the trade.

*"Now, the future is full of hope thanks to my workshop. I plan to strengthen it with more equipment and personnel for more production. This will allow me to ensure a good education for my daughter and provide her with the happiness she needs."*

# FINANCIAL OVERVIEW

In 2023, Panzi Foundation received \$16.25 million in cash revenue across our US and DRC offices and had expenditures of \$15.94 million



# OUR PARTNERS

Panzi's work in 2023 was made possible thanks to the catalytic support of the following partners, as well as a group of committed individual donors.

- |   |   |   |
|---|---|---|
| Albert Kunstadter Family Foundation                           | European Union  | Mankind is my Business  |
| AMADE Mondiale  | Evangelische Kirche von Westfalen (EKvW)  | MCJ Amelior Foundation  |
| Association les Maillons de l'Espoir                          | Everyone Everywhere Foundation  | Moseka Action Project   |
| Bessemer Giving Fund  | Fight for Dignity   | Norwegian Church Aid (NCA)  |
| Bibliothèques Sans Frontières                                 | Fondation L'Oréal   | PMU Interlife   |
| Caerus Foundation   | Fondation Pierre Fabre  | Stichting Vluchteling   |
| Caritas Italiana  | Fondation Roi Baudouin  | The Primate's World Relief and Development Fund (PWRDF)           |
| Child Mercy Sweden (Barn Samariten)                           | Fonds Social de la République Démocratique du Congo, in partnership with the World Bank | United Nations Children's Fund (UNICEF)                           |
| Children of Panzi   | Giuseppe and Pericle Lavazza Foundation   | United Nations High Commissioner for Refugees (UNHCR)             |
| Croix Rouge Luxembourgeoise                                   | Global Strategies   | United Nations Industrial Development Organization (UNIDO)        |
| Croix Rouge Monégasque  | Global Survivors Fund   | United Nations Population Fund (UNFPA)                            |
| Deutsche Gesellschaft für Internationale Zusammenarbeit (GIZ) | IMA World Health, in partnership with USAID   | Université de Montréal, in partnership with Global Affairs Canada |
| Dr. Denis Mukwege Foundation                                  | Make Music Matter   | World Food Program  |
| Enabel  |   |   |
| Equal Exchange  |   |   |



© 2023, Panzi Foundation  
[panzifoundation.org](http://panzifoundation.org)

**Panzi Foundation  
DRC Headquarters**  
Mushununu, Q. Panzi  
South Kivu Province  
Bukavu 266

+243 811 443 123

**Panzi Foundation  
USA Office**  
1120 20th St NW  
Suite 500 North  
Washington, D.C. 20036

+1 301.541.8375